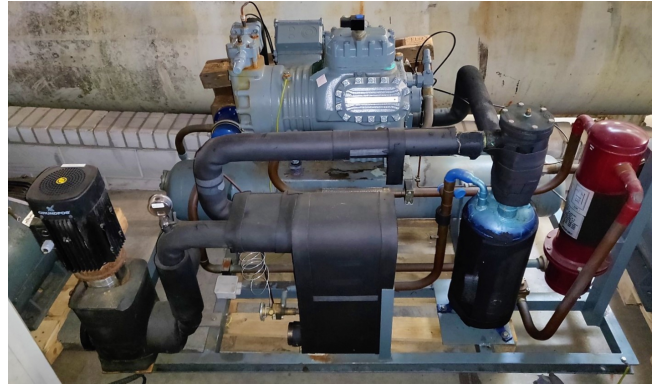


DWM D6DJ4 400X AWM-D

Specifications

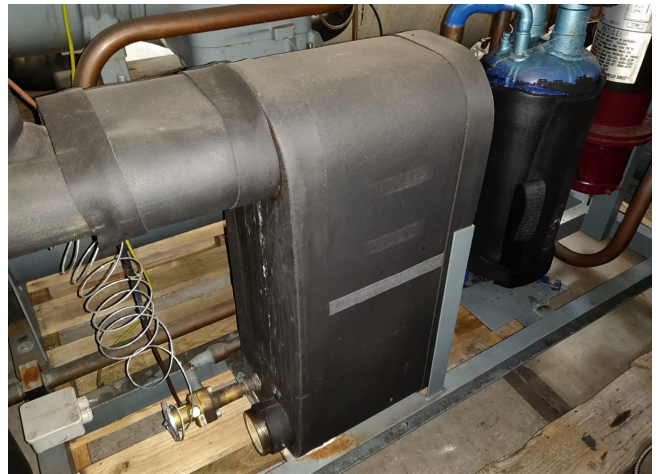
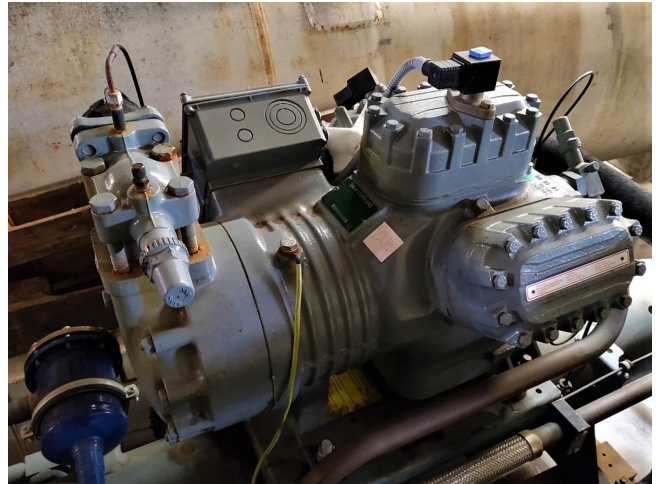
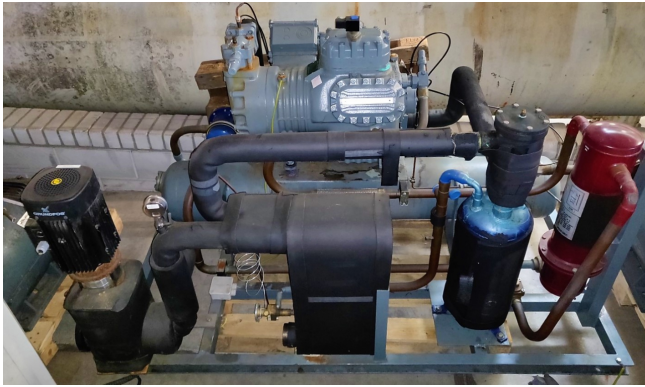
Marca	DWM
Tipo	D6DJ4 400X AWM-D
Refrigerante	Freon
kW at 0°C/+40°C	103.45
kW at -5°C/+40°C	86.50
kW at -10°C/+40°C	71.75
kW at -20°C/+40°C	47.98
kW at -30°C/+40°C	30.35
Electromotor Specs	3 kW
Control de capacidad	✓
Sober Bancada	✓
Comentarios	capacity based on R404A, you can also use this on alternative types of Freon
Package / Rack	✓
Tamaños	2000x1100x1200 mm (LxWxH)
Stock	1

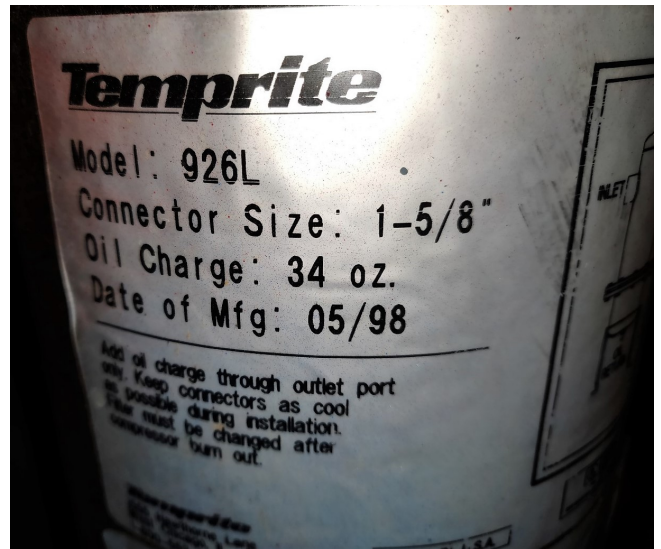
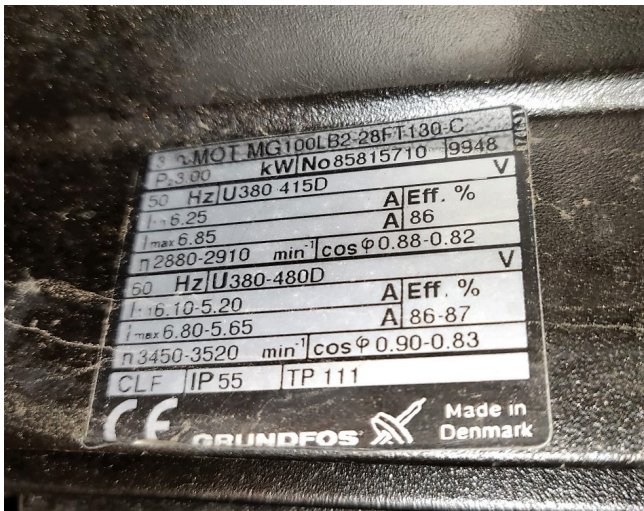


Description

Used DWM D6DJ4 400X AWM-D

Used DWM D6DJ4 400X AWM/D
 Compressor // Temprite Model: 926L -
 Connector size:1-5/8" // Electromotor:
 Grundfos MG100LB2-28 / 50 Hz /
 380-415V / 3,00kW / 6,25A at
 2880-2910 RPM // 1x Oil Cooler







Model: D6DJ-400 X
Capacity

R404A/R507

Cooling capacity [kW]

t _c \ t _e	-35	-30	-25	-20	-15	-10	-5	0	5
20	33.88	42.72	53.28	65.79	80.49	97.58	117.29	139.85	165.48
25	31.29	39.68	49.64	61.39	75.16	91.17	109.64	130.80	154.86
30	28.66	36.61	45.96	56.96	69.80	84.73	101.96	121.71	144.21
35	25.99	33.50	42.26	52.49	64.41	78.26	94.24	112.60	133.54
40	-	30.35	38.51	47.98	58.98	71.75	86.50	103.45	122.83
45	-	27.17	34.72	43.43	53.52	65.21	78.71	94.26	112.08
50	-	23.94	30.90	38.85	48.02	58.62	70.89	85.04	101.30
55	-	20.67	27.03	34.23	42.48	52.00	63.03	75.79	90.49

Power input [kW]

t _c \ t _e	-35	-30	-25	-20	-15	-10	-5	0	5
20	14.06	15.82	17.56	19.23	20.75	22.07	23.13	23.88	24.24
25	14.72	16.64	18.58	20.48	22.28	23.91	25.32	26.44	27.22
30	15.36	17.43	19.56	21.68	23.74	25.67	27.41	28.91	30.10
35	15.97	18.18	20.49	22.83	25.14	27.35	29.42	31.28	32.87
40	-	18.90	21.37	23.91	26.46	28.96	31.34	33.55	35.53
45	-	19.56	22.20	24.93	27.71	30.47	33.16	35.71	38.07
50	-	20.19	22.97	25.89	28.89	31.91	34.89	37.77	40.50
55	-	20.76	23.68	26.77	29.98	33.25	36.52	39.72	42.80